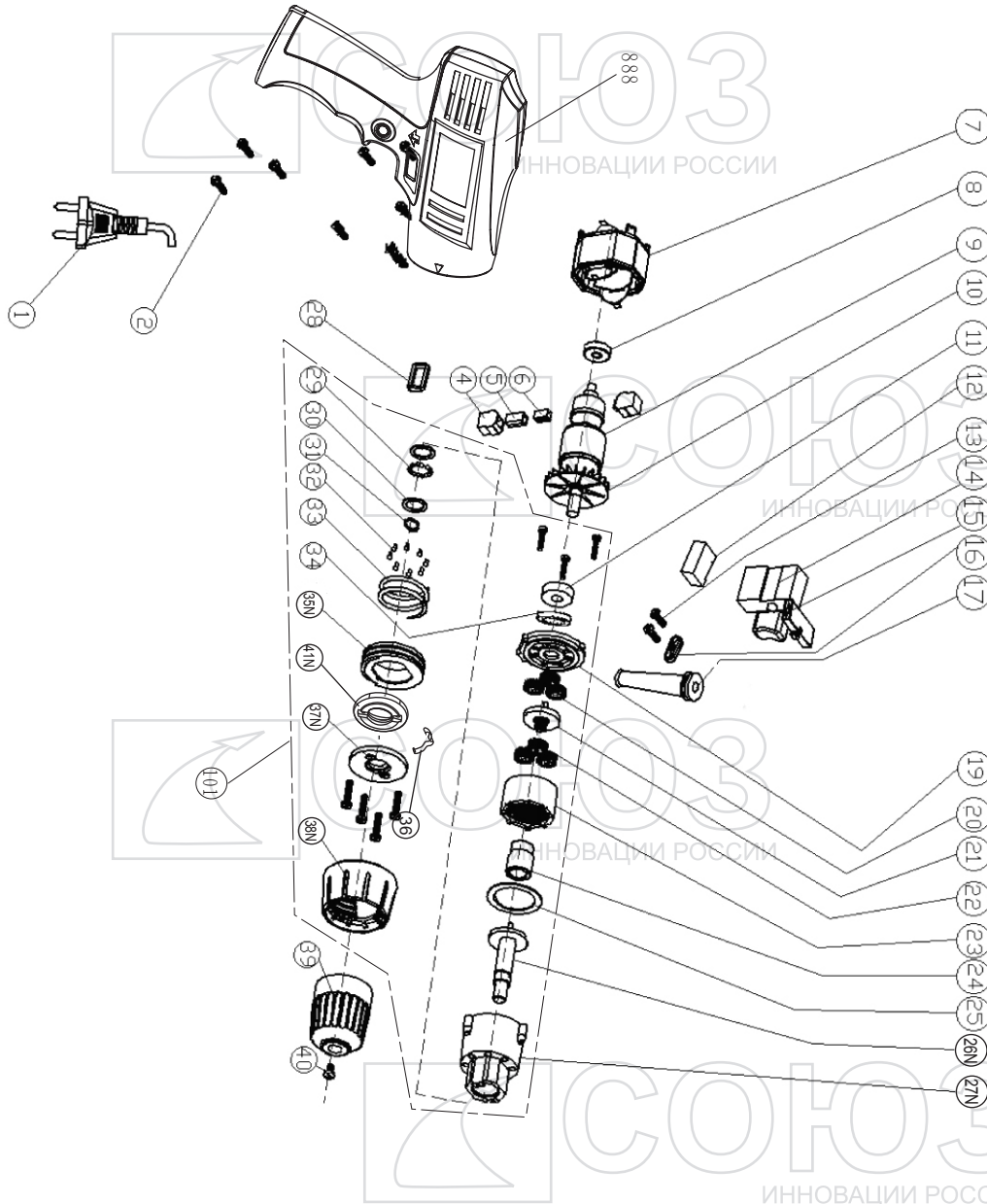


ДУС-2140



NO.	DESCRIPTION
1	POWER CORD AND PLUG
2	TAPPING SCREW
4	BRUSH BOX
5	BRUSH HOLDER
6	CARBON BRUSH
7	STATOR
8	BEARING 626Z
9	ROTOR
10	FAN
11	BEARING 608Z
12	CAPACITOR
13	TAPPING SCREW
14	SWITCH
15	FORWARD/REVERSE LEVER
16	CORD CLAMP
17	CORD GUARD
19	MOTOR BASE
20	PINION
21	PLANET BRACKET
22	PINION
23	INNER GEAR RING
24	SHAFT SLEEVE
25	FLAT WASHER
26N	MAIN SHAFT
27N	GEAR BOX
28	MAGNET RING
29	STEEL BALL
30	FLAT WASHER
31	CIRCLIP FOR SHAFT
32	STEEL BALL
33	SPRING
34	WOOL FELT
35N	INNER SCREW
36	WASHER
37N	PRESS BOARD
38N	TORQURE ADJUSTING RING
39	CHUCK
40	TAPPING SCREW
41N	TORQURE ADJUSTING POSITION RING
101	GEAR BOX ASSEMBLE
888	HOUSING ASSEMBLE

SO20120820

ИННОВАЦИИ РОССИИ